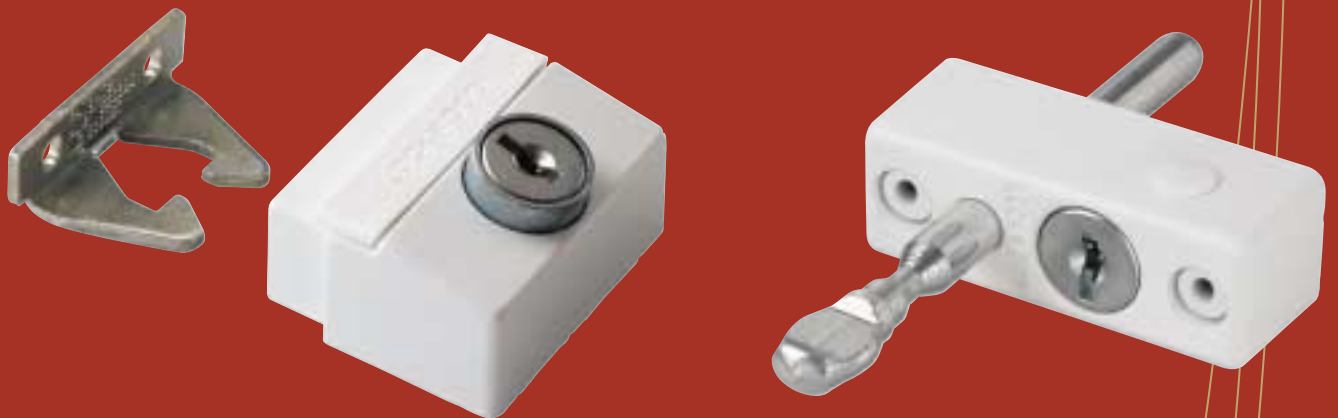




# Window Locks



## 785 Keyed Window Lock

### Description

#### For Sliding Aluminium Windows

Key operated window lock suitable for most aluminium sliding windows.

Allows the window to be locked in the closed or partly open position for ventilation.

### Features & Specifications

Steel deadlocking bar.

Available keyed alike with one key convenience for all window locks.

Supplied with thief deterrent one way screws for added protection.

#### Case

High purity zinc alloy.

#### Locking Bolt

Plated case hardened steel.

#### Mechanism

5 disc tumbler.

### Keying

#### Standard Keying

Supplied individually keyed with two keys.

960 key combinations.

Key blank KB225.

#### Special Keying

Can be keyed alike.

### Ordering Procedure

#### Display Pack – Single Pack

Black	785BLKDP
Primrose	785PRMDP
Brown	785BRNDP
Doeskin	785DSDP
Silver	785SILDP
White	785WHDP

#### Display Pack – Four Pack (keyed alike)

Black	785-4BLKDP
Primrose	785-4PRMDP
Brown	785-4BRNDP
Doeskin	785-4DSDP
Silver	785-4SILDP
White	785-4WHDP

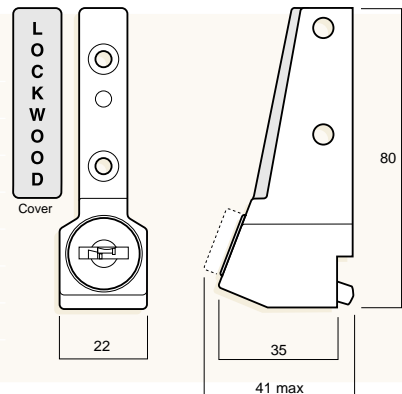
#### Trade Pack

Black	785BLK
Primrose	785PRM
Brown	785BRN
Doeskin	785DS
Silver	785SIL
White	785WH



### Accessories

Accessory kit,	Black	20 pack	785-6BLK-20
Accessory kit,	Brown	20 pack	785-6BRN-20
Accessory kit,	Doeskin	20 pack	785-6DS-20
Accessory kit,	Primrose	20 pack	785-6PRM-20
Accessory kit,	Silver	20 pack	785-6SIL-20
Accessory kit,	White	20 pack	785-6WH-20
Security head mounting screw		100 pack	785-125-100
Mounting screw		20 pack	785-25-100



## Window Locks

### 885 Thru Flyscreen Keyed Window Lock

#### Description

A simple-to-install lock for locking timber awning windows with or without flyscreens. Ideal for installation alongside window winders or simple catches.

#### Features & Specifications

Easy-to-use push button locking action, unlocked by key.

Available keyed alike with one key convenience for all window locks.

Supplied with thief deterrent one way screws for added protection.

#### Application

For timber awning windows.

#### Case

High purity zinc alloy.

#### Sash Bracket

Steel pressing.

#### Mechanism

5 disc tumbler.

#### Keying

##### Standard Keying

Supplied individually keyed with two keys.

960 key combinations.

Key blank KB225.

##### Special Keying

Can be keyed alike.

#### Ordering Procedure

##### Display Pack – Single Pack

Brown 885BRNDP

White 885WHDP

##### Display Pack – Four Pack (keyed alike)

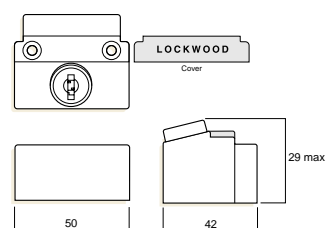
Brown 885-4BRNDP

White 885-4WHDP

##### Trade Pack

Brown 885BRN

White 885WH



### 880 Keyed Window Lock

#### Description

##### For Timber Framed Windows

Key operated window lock suitable for most timber windows and some metal framed windows.

Windows and other applications such as sliding doors and cupboards.

Features include steel deadlocking bars and thief deterrent one way screws.

Available keyed alike with one key convenience for all window locks.

#### Application

Sliding and double hung windows.

#### Features & Specifications

Case hardened steel bolt.

Pressure zinc diecast.

Deadlocking bolt.

Available keyed alike.

Supplied with thief deterrent one way screws for added protection.

#### Case

High purity zinc alloy.

#### Locking Bolt

Plated case hardened steel.

#### Mechanism

5 disc tumbler.

#### Keying

##### Standard Keying

Supplied individually keyed with two keys.

960 key combinations.

Key blank KB225.

##### Special Keying

Can be keyed alike.

#### Ordering Procedure

##### Display Pack – Single Pack

Polished Brass Plate 880PBDP

Brown 880BRNDP

White 880WHDP

##### Display Pack – Four Pack (keyed alike)

Brown 880-4BRNDP

White 880-4WHDP

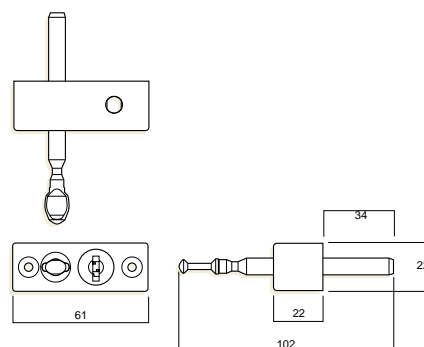
##### Trade Pack

Polished Brass Plate 980PBP

Chrome Plate 880CP

Brown 880BRN

White 880WH





Visit us at: [www.lockwoodsecurity.com.au](http://www.lockwoodsecurity.com.au)

## Sales Offices & Authorised Agents

### Victoria – Head Office

50 Edward Street  
Oakleigh Vic. 3166  
Telephone (03) 8574 3888  
Facsimile (03) 8574 3788

### Queensland South

450 Sherwood Road  
Sherwood Qld 4075  
Telephone (07) 3373 5200  
Facsimile (07) 3373 5256

### Queensland North

Ralph Buck Agencies  
15 Mackley Street  
Garbutt Qld 4814  
Telephone (07) 4779 0177  
Facsimile (07) 4775 1480

### New South Wales

Unit 7, 192 Kingsgrove Road  
Kingsgrove NSW 2208  
Telephone (02) 9554 4011  
Facsimile (02) 9554 3772

### South Australia

182 Magill Road  
Norwood SA 5067  
Telephone (08) 8364 1930  
Facsimile (08) 8364 1931

### Western Australia

45 Gladstone Street  
East Perth WA 6004  
Telephone (08) 9227 9588  
Facsimile (08) 9227 8913

### Tasmania

23 Antill Street  
South Hobart Tas. 7000  
Telephone (03) 6223 5404  
Facsimile (03) 6224 0435

### Northern Territory

Taylor Enterprises  
Lot 1360 Makagon Road  
Berrimah NT 0828  
Telephone (08) 8984 3653  
Facsimile (08) 8947 0082

### New Zealand

9B Mahunga Drive  
Mangere Bridge  
Auckland New Zealand  
Telephone (09) 634 5590  
Facsimile (09) 634 5589

### Export Department

50 Edward Street  
Oakleigh Vic. 3166  
Telephone +61 (0)3 8574 3888  
Facsimile +61 (0)3 8574 3700



### Manufacturing Plants

#### Victoria

50 Edward Street  
Oakleigh Vic. 3166  
Telephone (03) 8574 3888  
Facsimile (03) 8574 3788

#### Queensland

450 Sherwood Road  
Sherwood Qld 4075  
Telephone (07) 3373 5200  
Facsimile (07) 3373 5256

### Asian Offices

**ASSA ABLOY – Malaysia**

**ASSA ABLOY – Singapore**

**ASSA ABLOY – Thailand**

**ASSA ABLOY – Hong Kong**

**ASSA ABLOY – Shanghai**

**ASSA ABLOY – Beijing**

Contact the Export Department, Australia for details.

### Worldwide Distributors

Contact the Export Department, Australia for details.



## Lockwood Guarantee

Lockwood Security Products Pty Limited ("Lockwood") guarantees its products against defects in workmanship and materials. If within the normal working life of a product it is found to be defective, Lockwood will supply the same or an equivalent product free of charge.

All electrical components used in our products are guaranteed for a period of five years from the date of manufacture. Lockwood however, assumes no liability under this guarantee for the following:

1. Improper installation or failure to follow fitting instructions.
2. Failure due to improper maintenance or fair wear and tear.
3. Indirect or consequential loss or damage.
4. Cost of removal and/or replacement.

5. Cost of freight and/or travelling time.

6. The plated finishes, Florentine Bronze, Architectural Bronze, Polished Brass, Gold and Satin Brass are classified as soft finishes. As deterioration is possible under some climatic conditions, these finishes are excluded from this guarantee.

7. Any modification to a product as supplied, or repairs, unless authorised by Lockwood.

8. Use of replacement parts other than authorised parts.

9. Malfunction or failure of the product due to the use of non-genuine Lockwood parts.

Nothing in the Lockwood guarantee excludes, restricts or modifies any condition, warranty, right or liability implied or protected by law where to do so would render the Guarantee, or any part of it, void.



Lockwood Security Products Pty Limited ABN 90 086 451 907

An ASSA ABLOY Group company

**ASSA ABLOY**